



**WILLIAMS & WHITE**  
MANUFACTURING



# Manufacturing Catalog

Accuracy / Quality / Service



## About Us

- Williams and White has long standing experience in the advanced manufacturing sector. Since 1957 Williams and White has worked in Aerospace, Energy, Forestry, Construction and the Marine sectors producing an array of mechanical components. From welded structures to machined components Williams and White is able to work with your team to handle your manufacturing needs as a turnkey project. Our team works with our organization to bring your designs to reality. Williams and White has a complete quality control department and is an ISO registered company. Our focus on delivering high quality components with an understanding of project requirements and deadlines ensures your needs are always met.

Williams & White operates the largest grinding facility in Western Canada, and its work can be found in some of the area's most well known projects, including; the Port Mann Bridge, the Lions Gate Bridge and the BC Place Roof. Williams & White offers world class manufacturing for projects and components of all scopes and sizes.

## Manufacturing Services

- Machining
  - Milling
  - Turning
  - Grinding
- Welding & Fabrication
- Project Management
- Quality Control

## Industries

- Aerospace
- Marine
- Mining
- Theme Park Equipment
- Medical Equipment
- Construction
- Clean Energy
- Forestry
- Oil & Gas

## Licenses



## Project Management

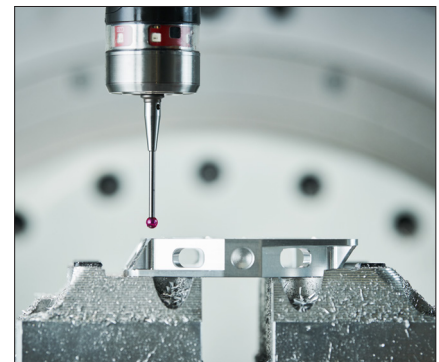
- Williams & White Manufacturing consists of dedicated project managers, mechanical designers, machinist, fabricators, welders, millwrights and quality control team. With over 60 years of experience, our dedicated project management team ensures that your project will be on time on budget and to the quality standards required.
- Williams and White utilizes an advanced ERP system to ensure traceability of your project throughout the project life-cycle. As a registered ISO, CWB and Controlled Goods facility we ensure your project is managed to the highest standards



## Quality Control

- Certified to ISO 9001:2015
- 100% Quality Control Inspection
- CMM Inspection
- CWB Weld Inspection
- Quality Control Documentation Package
- Inspection Test Plan
- QMS Monthly Reporting
- Root Cause Analysis & Corrective Action
- Dedicated QC Calibrated Measuring Equipment
- MTR Tracking
- Supplier Evaluations

## CMM Measurement Station

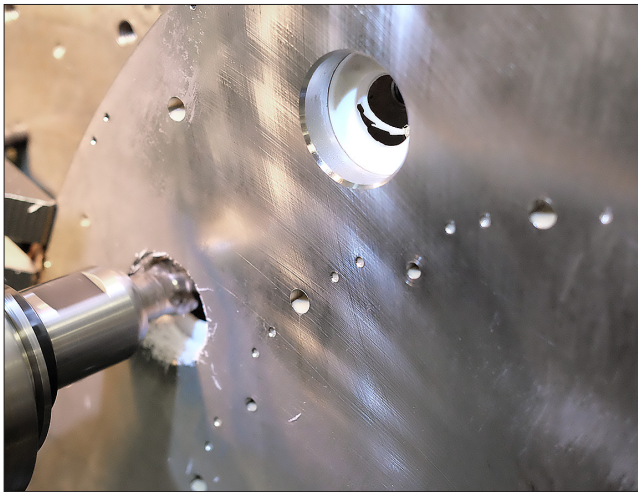
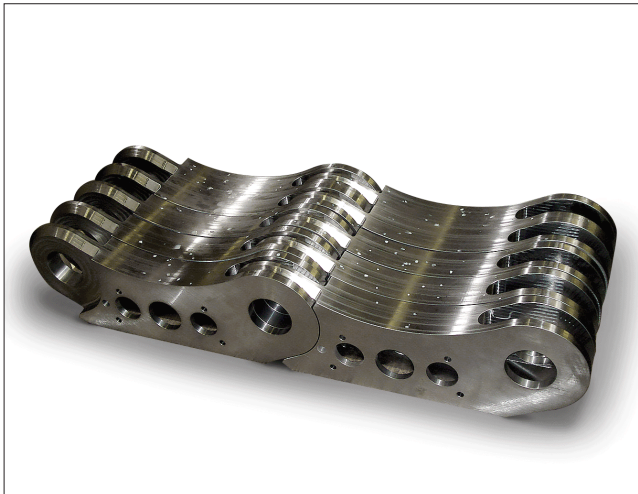


- 20' x 4' x 3' slotted cast base
- 20,000 pounds overhead lift
- WIFI communication
- CAD model comparison
- Certified to meet the most rigorous ISO 10360-12:2016 measurement standard in the world, ensuring maximum measurement consistency and reliability
- ISO 9001:2015 certified
- 4' x 4' granite slab
- Full tool kit of certified manual measurement tools
- Certified measurement professionals
- Fully documented inspection reports
- In-house or site inspection service
- MITUTOYO BHN-710 Coordinate Measuring Machine, X-28", Y-59", Z-24", 2,200
- FARO ARM laser tracker





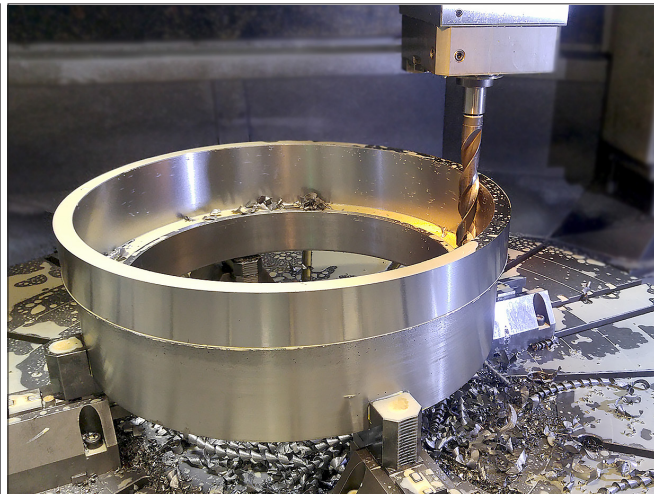
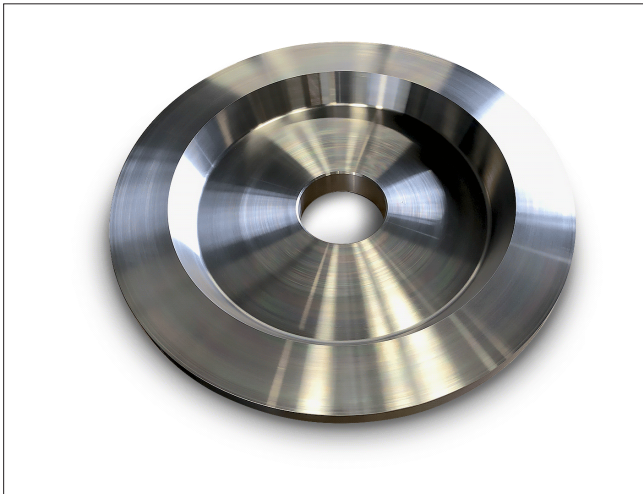
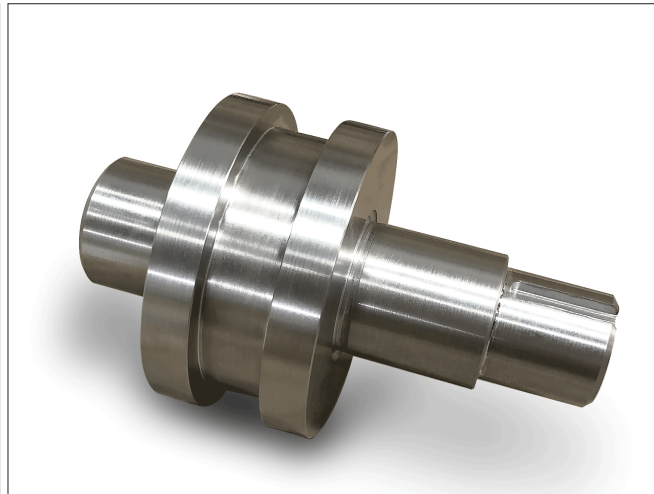
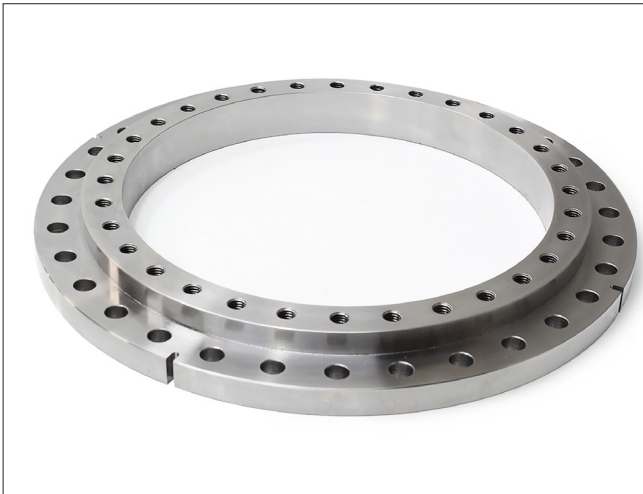
## Milling



### Machine Equipment List

- "SANROCCO" 3 - Axis CNC Horizontal Boring Mill
  - 60" x 98" x 96"
  - 36" Z-Axis ram
  - 15,500lbs table load
- "Niigata" Horizontal Machining Center
  - 40" x 38" x 34"
  - 12,000 RPM Spindle
- "KAO MING" 3 Axis CNC Bridge Mill
  - 127" x 63" x 28" (Z-Axis Travel)
  - Right Angle Head, 4th Axis Ready
- "MITSUBISHI" 5-Face Bridge Type CNC Vertical Machining Center
  - 165" x 98" x 72"
  - Right Angle Head Capable
  -
- "FEELER" CNC Vertical Machining Center
  - 44" x 24" x 24"
- "MAZAK" High Speed CNC Vertical Machining Center
  - 80" x 20" x 20"
  - 12,000 RPM Spindle
- "FEELER" CNC Vertical Machining Center
  - 60" x 24" x 27"
  - 4th Axis Ready

## Turning



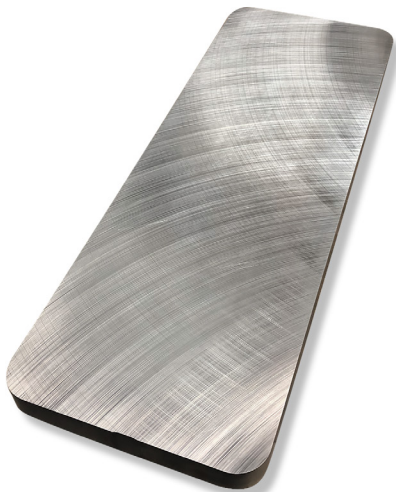
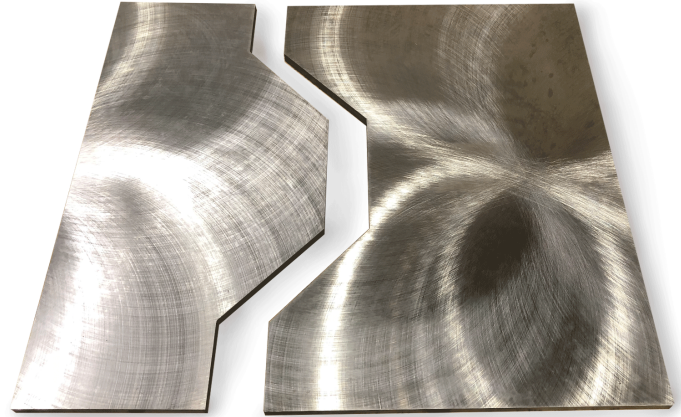
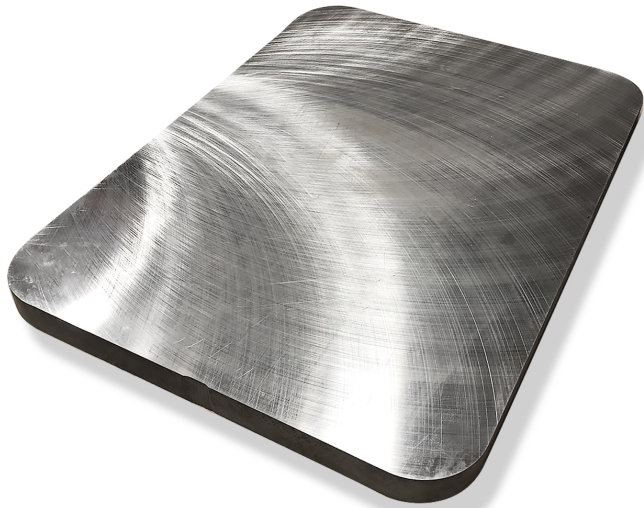
### Lathe Machine List

- “YOUJI” Vertical CNC Turning Center
  - Multi-function operation
  - (Milling, Drilling, Tapping)
  - Live tooling Capabilities
  - Table diameter: 79”
  - Max swing: 99”
  - Max cutting height: 63”
  - Max load table: 22,000 lbs
- “HAAS TL-4” CNC Lathe
  - 30” Dia. x 90”
  - 10.5” through bore
- Engine Lathe Graziano - 20” Dia. x 72”
- Engine Lathe Colchester - 15” Dia x 60”





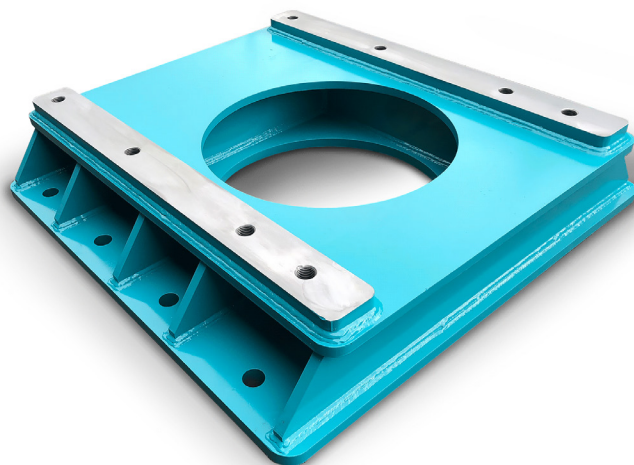
## Grinding



### Grinding Equipment List

- Lumsden Rotary Surface Grinder – 84" Dia. x 18"
- Blanchard Rotary Surface Grinder – 60" Dia. x 22"
- Mattison Reciprocating Surface Grinder - 120" x 24" W x 20"H
- Chevalier Micron Surface Grinder - 48" x 14" W x 12"
- WMW Universal Cylindrical Grinder – 4" Dia x 12"

# Fabrication



# Welding Services

## CWB Certified

- Shop: CSA STANDARD W47.1-Div 2
- Welders: CSA W59
- Equivalent to: AWS D1.1

## Material

- Carbon Steel
- Stainless Steel
- Aluminum

## Processes

- FCAW (Flux-cored arc welding)
- GMAW (gas metal arc welding)
- SMAW (shielded metal arc welding)
- GTAW (gas tungsten arc welding)



---

**WILLIAMS & WHITE**  
MANUFACTURING

---

WWW.WILLIAMSANDWHITEMANUFACTURING.COM  
6307 LAUREL ST, BURNABY BC, V5B 3B3, CANADA  
604.2932268  
SALES@WILLIAMSANDWHITE.COM

